

SPILL NOTIFICATIONS¹
ST. CLAIR RIVER AREA OF CONCERN
(Final Draft)

1. Who is required to be notified when a spill occurs in Ontario?²

In Ontario, individuals are required by provincial law (Ontario Regulation 675/98: Classification and Exemption of Spills and Reporting of Discharges) to report spills if:

- they allowed the spill to occur; or
- they had control of the substance immediately before the spill occurred; or
- they are a member of a public agency and, to their knowledge, the spill has not already been reported

When reporting a spill in Ontario, it must be reported to the Ministry of the Environment, Conservation and Parks Spills Action Centre (SAC) by telephone. SAC is available to receive reports of spills 24 hours a day, 7 days a week at:

- 416-325-3000
- Toll-free: 1-800-268-6060
- TTY: 1-855-889-5775

In addition to contacting SAC, the spill must also be immediately reported to:

- the local municipality
- the owner of the substance (if known)
- the person in control of the substance (if known)

When reporting the spill, the individual will be asked to provide:

- their name and phone number
- name and phone number of the person or company in control of the product spilled
- date, time and location of the spill
- duration of the spill (if known) and whether the spill is ongoing
- type and quantity of pollutant spilled, including hazard level or toxicity information
- source of the spill and information on the cause
- description of adverse effects
- environmental conditions that affect the spill (weather, traffic, etc.)
- actions being taken to respond
- other agencies and parties responding

¹ This Fact Sheet should be read in conjunction with the Drinking Water Fact Sheet dated August 2022

² Source: <https://www.ontario.ca/page/report-pollution-and-spills#>

³ Source: <https://www.michigan.gov/egle/regulatory-assistance/emergency-planning-and-community-right-to-know/spill-release-reporting>



After the individual reports the spill, an environmental officer with the Ministry of the Environment, Conservation and Parks will:

- document the information and actions taken
- assess the environmental and health impacts based on gathered information
- ensure responsible parties respond to spill events as per their legislative responsibility
- track and follow up on required cleanup activities
- provide advice and information related to spills or environmental incidents
- coordinate a response with other agencies, if needed
- initiate government response when required

A flow chart is provided in **Attachment 1**, as an example, to provide a high-level overview of the various parties that would typically be notified of a spill to the St. Clair River that originated in Ontario.

2. Who is required to be notified when a spill occurs in Michigan?³

Chemical releases in Michigan are potentially reportable under one or more of twenty-six different state and federal regulations. To help owners and operators of facilities in Michigan, including vehicles and farms, understand which regulations apply to a specific release and their potential notification and reporting requirements, a "[Release Notification Requirements in Michigan](#)" document was developed.

Individuals and companies are advised to check their permits, licenses, registrations, pollution prevention plans, and local ordinances for additional release reporting requirements.

Environmental Emergencies are to be reported to the 24-hour Pollution Emergency Alerting System (PEAS) Hotline at 800-292-4706. During daytime hours, the appropriate [Michigan Department of Environment, Great Lakes, and Energy \(EGLE\) District Office](#) can also be contacted directly.

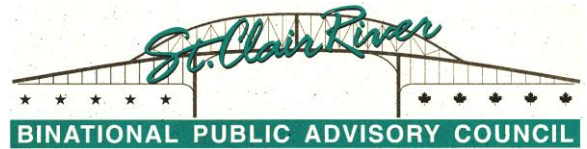
NOTE: Many incidents that are reportable to EGLE also warrant reporting to the federal National Response Center (NRC) which serves the U.S. Environmental Protection Agency and the U.S. Coast Guard: **Federal NRC hotline: 800-424-8802**

A flow chart is provided in **Attachment 2**, as an example, to provide a high-level overview of the various parties that would typically be notified of a spill to the St. Clair River that originated in Michigan.

¹ This Fact Sheet should be read in conjunction with the Drinking Water Fact Sheet dated August 2022

² Source: <https://www.ontario.ca/page/report-pollution-and-spills#>

³ Source: <https://www.michigan.gov/egle/regulatory-assistance/emergency-planning-and-community-right-to-know/spill-release-reporting>



3. Who can I contact or where can I find more information if I have questions/concerns about Spill Prevention, Spill Notifications and/or Spill Reponse?

In Ontario, for more information, contact the Ministry of the Environment, Conservation and Parks Public Information Line at:

Tel: 416-325-4000

Toll-free: 1-800-565-4923

TTY: 416-326-9236

Toll-free TTY: 1-855-515-2759

In Michigan, if you just have a question or are seeking information about EGLE programs, regulations, reporting requirements, reportable quantities, etc., call the EGLE Environmental Assistance Center at: 800-662-9278.

We acknowledge the role of First Nations in our efforts to protect water quality.

The Anishinaabeg people have a strong spiritual and cultural connection to water. In their culture, women have inherited the traditional responsibility of protecting the water, carrying it and speaking for it, as the ones that carry new life. Water (Nibi) is not a physical entity, water is life, has its own spirit, it is healing and it is sacred medicine.

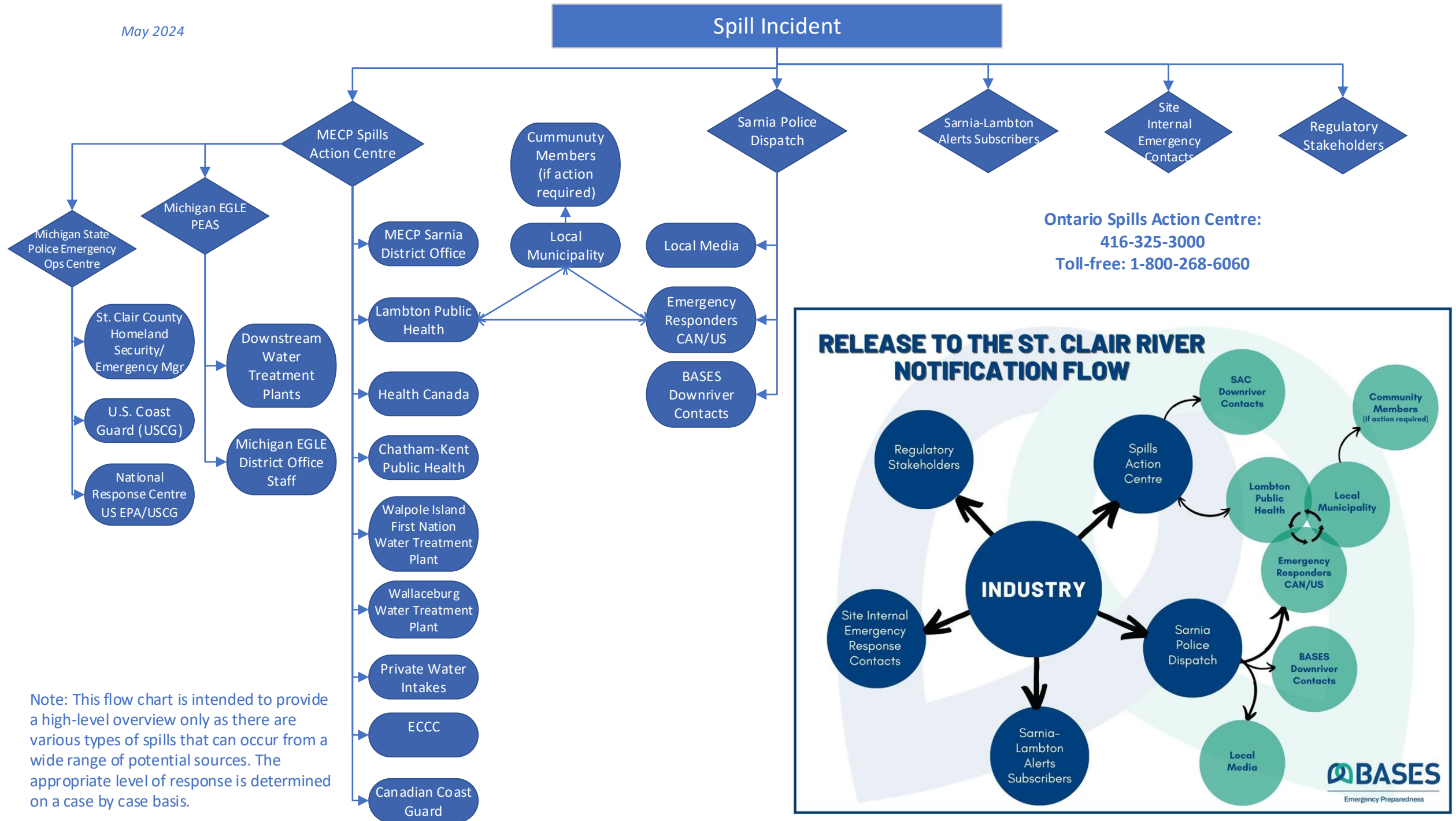
¹ This Fact Sheet should be read in conjunction with the Drinking Water Fact Sheet dated August 2022

² Source: <https://www.ontario.ca/page/report-pollution-and-spills#>

³ Source: <https://www.michigan.gov/egle/regulatory-assistance/emergency-planning-and-community-right-to-know/spill-release-reporting>

ATTACHMENT 1 - Notification Process for Spills to the St. Clair River from Ontario

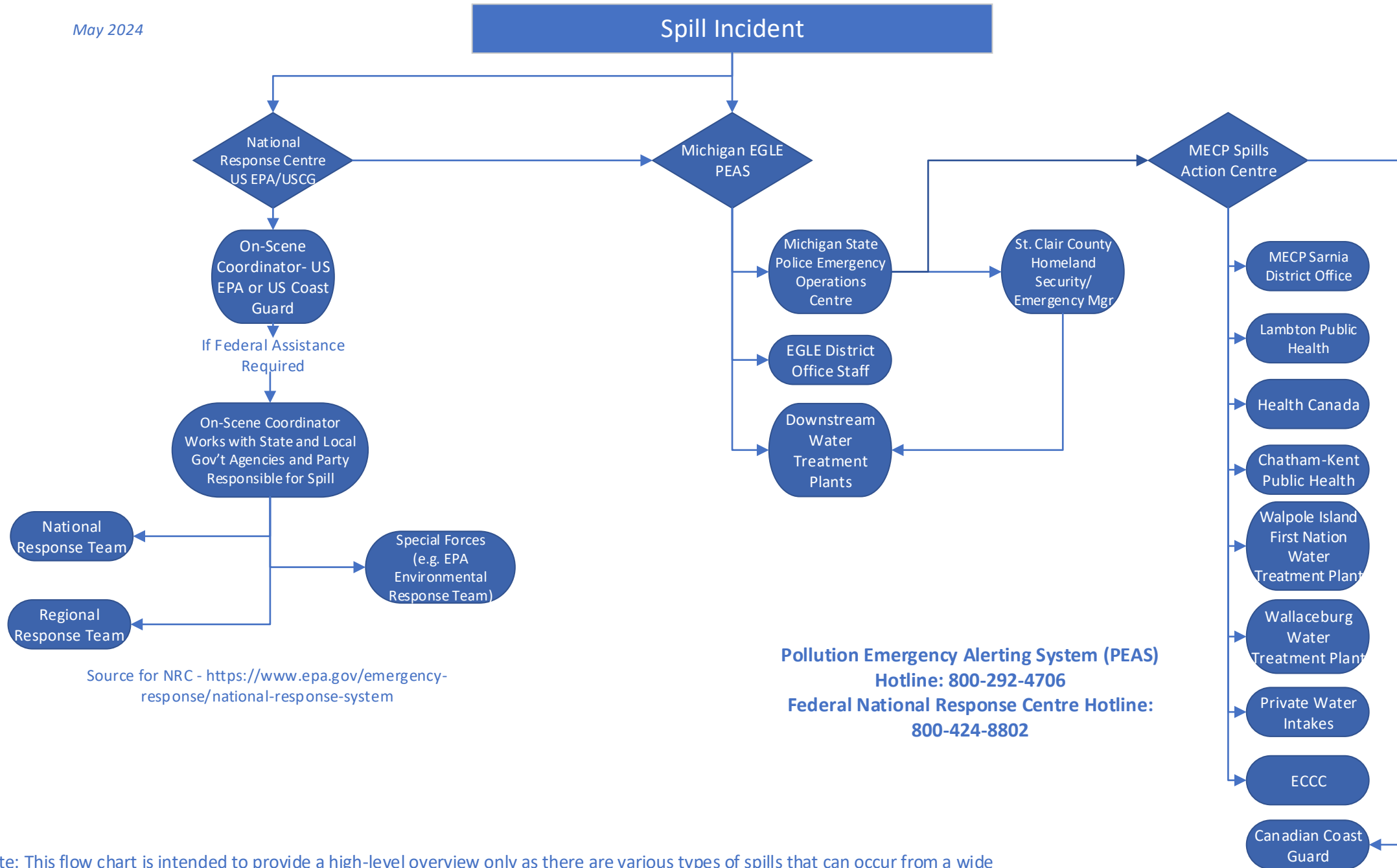
May 2024



Note: This flow chart is intended to provide a high-level overview only as there are various types of spills that can occur from a wide range of potential sources. The appropriate level of response is determined on a case by case basis.

ATTACHMENT 2 - Notification Process for Spills to the St. Clair River from Michigan

May 2024



Source for NRC - <https://www.epa.gov/emergency-response/national-response-system>

Note: This flow chart is intended to provide a high-level overview only as there are various types of spills that can occur from a wide range of potential sources. The appropriate level of response is determined on a case by case basis.